

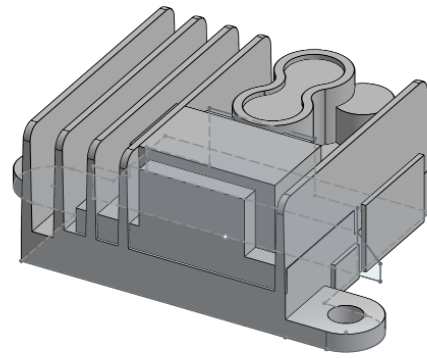


## Andy Shinn

Thank you for taking a look at my model! I make my own models and often times reproduce existing parts in CAD so that I can model in-context. I hope you find this model useful for your own projects. Please find more of my models at [myshapes.andyshinn.as](https://myshapes.andyshinn.as) or on my GitHub at [github.com/andyshinn/myshapes](https://github.com/andyshinn/myshapes).

This is a generated PDF and should have any special information about this document on the right. If you find any issues or have suggestions, please feel free to reach out. I appreciate any feedback and contributions to improve the model.

- ✓ Email [andys@andyshinn.as](mailto:andys@andyshinn.as)
- 🌐 Website [andyshinn.as](https://andyshinn.as)
- 🐙 GitHub [github.com/andyshinn](https://github.com/andyshinn)
- 💬 Discord [andyshinn](https://discord.com/users/andyshinn)
- 📺 YouTube [youtube.com/@andyshinn](https://youtube.com/@andyshinn)



## 36-84V-USB1.0A DC-DC PSU

*Created Jul 16, 2024*

### Links

- [View on Onshape](#)
- [View on Myshapes](#)

### Versions

- **V1** - Jul 16, 2024
  - Initial outline