

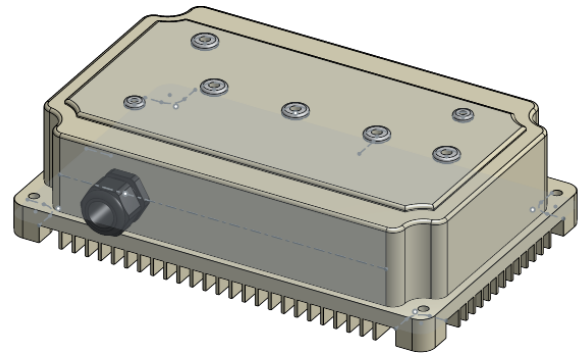


## Andy Shinn

Thank you for taking a look at my model! I make my own models and often times reproduce existing parts in CAD so that I can model in-context. I hope you find this model useful for your own projects. Please find more of my models at [myshapes.andyshinn.as](https://myshapes.andyshinn.as) or on my GitHub at [github.com/andyshinn/myshapes](https://github.com/andyshinn/myshapes).

This is a generated PDF and should have any special information about this document on the right. If you find any issues or have suggestions, please feel free to reach out. I appreciate any feedback and contributions to improve the model.

✓ Email [andys@andyshinn.as](mailto:andys@andyshinn.as)  
🌐 Website [andyshinn.as](https://andyshinn.as)  
🐙 GitHub [github.com/andyshinn](https://github.com/andyshinn)  
💬 Discord [andyshinn](https://discord.com/users/andyshinn)  
📺 YouTube [youtube.com/@andyshinn](https://youtube.com/@andyshinn)



## Kelly KLS72501-8080IPS Motor Controller

*Created Apr 17, 2021*

### Links

- [View on Onshape](#)
- [View on Myshapes](#)

### Versions

- **V3** - Jun 01, 2021
- **V2** - Apr 19, 2021
- **V1** - Apr 17, 2021