

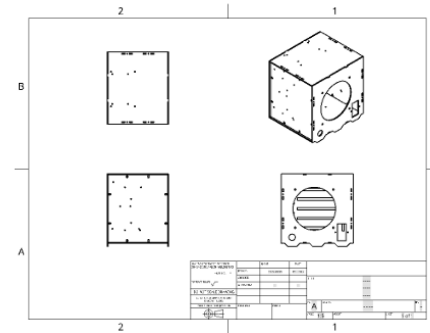


## Andy Shinn

Thank you for taking a look at my model! I make my own models and often times reproduce existing parts in CAD so that I can model in-context. I hope you find this model useful for your own projects. Please find more of my models at [myshapes.andyshinn.as](https://myshapes.andyshinn.as) or on my GitHub at [github.com/andyshinn/andyshinn/myshapes](https://github.com/andyshinn/andyshinn/myshapes).

This is a generated PDF and should have any special information about this document on the right. If you find any issues or have suggestions, please feel free to reach out. I appreciate any feedback and contributions to improve the model.

- ✉ Email [andys@andyshinn.as](mailto:andys@andyshinn.as)
- 🌐 Website [andyshinn.as](https://andyshinn.as)
- 🐙 GitHub [github.com/andyshinn](https://github.com/andyshinn)
- 💬 Discord [andyshinn](https://discord.com/invite/andyshinn)
- 📺 YouTube [youtube.com/@andyshinn](https://youtube.com/@andyshinn)



## Kuberdoo

Created Oct 09, 2017

### Links

- [View on Onshape](#)
- [View on Myshapes](#)

### Versions

- **V4** - May 08, 2018
  - Updated for a couple of fixes / additions:
    - \* Added 2 additional hole mounts for the LRS-100 PSU
    - \* Fixed back panel notch alignment
    - \* Moved top-rear GS108 mounting hole back 3mm
    - \* Moved PSU and board stack back away from front panel a bit for relief
- **V3** - Oct 25, 2017
  - This was the first version that was cut. There are some minor errors (top rear notches not lining up with top panel, PSU holes too far forward, switch holes not lined up, switch too far back).
- **V2** - Oct 13, 2017
- **V1** - Oct 13, 2017