

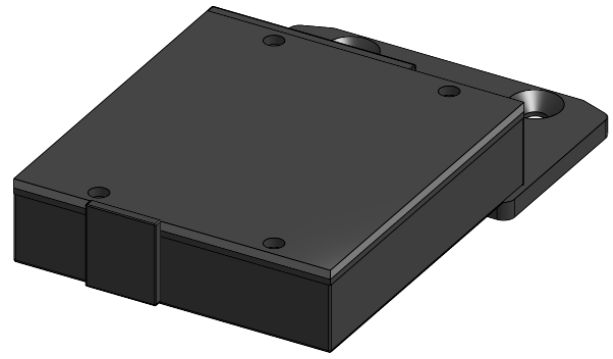


Andy Shinn

Thank you for taking a look at my model! I make my own models and often times reproduce existing parts in CAD so that I can model in-context. I hope you find this model useful for your own projects. Please find more of my models at myshapes.andyshinn.as or on my GitHub at github.com/andyshinn/myshapes.

This is a generated PDF and should have any special information about this document on the right. If you find any issues or have suggestions, please feel free to reach out. I appreciate any feedback and contributions to improve the model.

- ✉ Email andys@andyshinn.as
- 🌐 Website andyshinn.as
- 🐙 GitHub github.com/andyshinn
- 💬 Discord [andyshinn](https://discord.com/invite/andyshinn)
- 📺 YouTube youtube.com/@andyshinn



Trampa VESC 6 MK VI HP

Created Jul 31, 2024

Links

- [View on Onshape](#)
- [View on Myshapes](#)

Versions

- **V1** - Jul 31, 2024
 - Initial body and external parts